

SSA Venue Guide

Knox Grammar School

2 Borambil Street, Wahroonga
(best entrance on Woodville Street)



Public Transport

Knox Grammar is located extremely close to Warrawee train station as well as being near a number of bus routes. If travelling by train, make sure to walk through the school to the Woodville entrance.

Parking



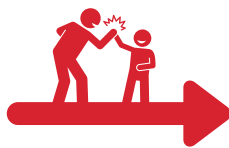
There is significant street parking along Woodville Avenue and plenty of room to arrange non-contact pick up and drops off for students.



Sign in

- The sign in desk is located just inside the Woodville entrance, just look out for our signs to guide you!
- Please arrive in your timeslot to ensure students can be taken promptly to their classes.

Sign out



- Students are to be signed out from the **same** location as the sign in desk.
- Please pick up your child at the **allocated** time - if you are going to be any later, please let us know so we can organise supervision!



Speaking Schools
AUSTRALASIA

SSA Venue Guide



What TO Bring

It is recommended that students bring:

- **Food** for lunch and recess – there is no opportunity to purchase food.
- A refillable bottle of **water**.
- **Sunscreen & hat** for breaks.
- Wet weather gear (depending on the forecast).
- **Any medication or medical aids** that they may require (e.g. EpiPens, asthma puffers, tablets etc). Upon arrival, please notify coaches where they have packed these items.



What NOT to Bring

Our programs are **nut free environments** – please ensure that your child does not bring any nuts with them to the programs.

Further, please **don't bring anything valuable** that would be missed if lost or damaged – we cannot accept responsibility for loss or damage to personal items.



Child Safety & Supervision

Speaking Schools Australasia has a number of policies regarding the supervision and safety of our students – please do not hesitate to get in touch if you would like to see a copy of our policies.

Further, all of our coaches have **valid Working with Children Checks**, and we have a **qualified First Aid Officer** at each of our programs who is able to perform first aid if required. If there are any serious medical issues, professional help will be sought.



Contact Details



Should you have any queries regarding a child attending our holiday program, please don't hesitate to get in touch with us on
0404 107 372.

We look forward to seeing you soon!



Speaking Schools
AUSTRALASIA