

SSA Venue Guide

Sydney Boys High School

556 Cleveland St, Moore Park
(best entrance on Anzac Parade)



Public Transport

SBHS is located very close to a number of bus stops on both Anzac Parade and Cleveland Street, as well as near the new Light Rail.

Parking



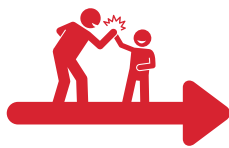
There is plenty of parking onsite near Gate #9 (off Anzac Parade) – you can enter from Cleveland Street, but please make sure to drive carefully past the buildings to the north of the site.



Sign in

- The sign in desk is located just next to the Gate #9 carpark entrance - once you park, just walk straight over to Block C!
- Please arrive in your timeslot to ensure students can be taken promptly to their classes.

Sign out



- Students are to be signed out from the same location as the sign in desk.
- Please pick up your child at the allocated time - if you are going to be any later, please let us know so we can organise supervision!



SSA Venue Guide



What TO Bring

It is recommended that students bring:

- Food for lunch and recess – there is no opportunity to purchase food.
- A refillable bottle of water.
- Sunscreen & hat for breaks.
- Wet weather gear (depending on the forecast).
- Any medication or medical aids that they may require (e.g. EpiPens, asthma puffers, tablets etc). Upon arrival, please notify coaches where they have packed these items.



What NOT to Bring

Our programs are **nut free environments** – please ensure that your child does not bring any nuts with them to the programs.

Further, please **don't bring anything valuable** that would be missed if lost or damaged – we cannot accept responsibility for loss or damage to personal items.



Child Safety & Supervision

Speaking Schools Australasia has a number of policies regarding the supervision and safety of our students – please do not hesitate to get in touch if you would like to see a copy of our policies.

Further, all of our coaches have **valid Working with Children Checks**, and we have a **qualified First Aid Officer** at each of our programs who is able to perform first aid if required. If there are any serious medical issues, professional help will be sought.



Contact Details



Should you have any queries regarding a child attending our holiday program, please don't hesitate to get in touch with us on
0404 107 372.

We look forward to seeing you soon!

