

# SSA Venue Guide

## Northside Campus

Northside Conference Centre, Cnr Oxley Street + Pole Lane



### Public Transport

We are around a 5-6 minute walk from St Leonards Train Station - there are plenty of trains (and buses) that go through!

### Parking



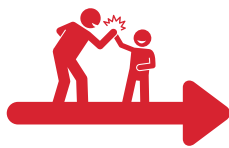
There is no parking onsite, but you can either use the kiss-and-ride no parking zone on Pole Lane, the paid parking on and around Oxley Street, or the free parking past Chandos Street.



### Sign in

- Sign in will occur just outside the main entrance on Pole Lane, so you are able to drop off your child in the No Parking zone and continue on!
- Please arrive in your timeslot to ensure students can be taken promptly to their classes.

### Sign out



- Students are to be signed out from the same location as the sign in desk.
- Please pick up your child at the allocated time - if you are going to be any later, please let us know so we can organise supervision!



# SSA Venue Guide



## What TO Bring

It is recommended that students bring:

- Food for lunch and recess – there is no opportunity to purchase food.
- A refillable bottle of water.
- Sunscreen & hat for breaks.
- Wet weather gear (depending on the forecast).
- Any medication or medical aids that they may require (e.g. EpiPens, asthma puffers, tablets etc). Upon arrival, please notify coaches where they have packed these items.



## What NOT to Bring

Our programs are **nut free environments** – please ensure that your child does not bring any nuts with them to the programs.

Further, please **don't bring anything valuable** that would be missed if lost or damaged – we cannot accept responsibility for loss or damage to personal items.



## Child Safety & Supervision

Speaking Schools Australasia has a number of policies regarding the supervision and safety of our students – please do not hesitate to get in touch if you would like to see a copy of our policies.

Further, all of our coaches have **valid Working with Children Checks**, and we have a **qualified First Aid Officer** at each of our programs who is able to perform first aid if required. If there are any serious medical issues, professional help will be sought.



## Contact Details



Should you have any queries regarding a child attending our holiday program, please don't hesitate to get in touch with us on  
**0404 107 372.**

**We look forward to seeing you soon!**

